

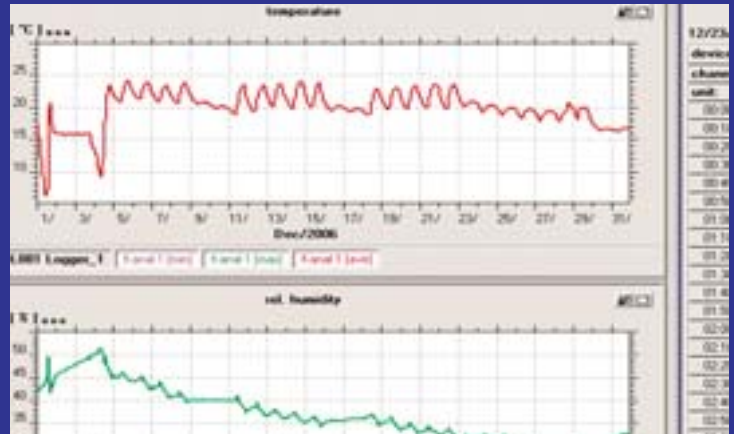
SmartGraph 2 Standard

Configuring measuring instruments

Data reading, data analysis

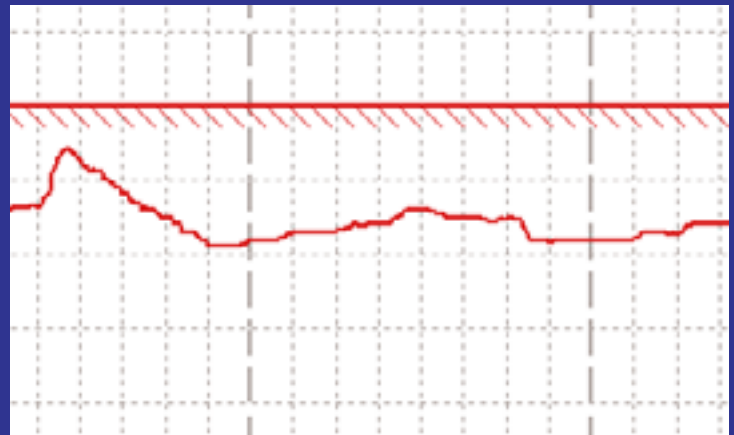
Graphic display

This permits a quick overview of the characteristics of the measuring data. Intuitively useable with zoom function from display of annual data creation ranging to 10 minute detail display.



Limit violation

A specification of the upper and lower limit per measuring channel can be parameterised by the user. Critical periods can be rapidly filtered by means of graphic display.



Configuration of measuring instrument

The user configures the measuring and storage intervals of the data logger.

The same applies when the maximum and minimum values as well as the values measured are to be written in the logger.

There is an input option for the offset in the configuration (1 point adjustment after calibration).



Recording function (PC)

In addition to the "offline option" (memory readout) the OPUS 10 can operate in "offline".

When the logger is connected to a PC the measured data is recorded and indicated online via SmartGraph software.

1/25/2007		
device	DL003 Op10Baro	
channel	[ave]	[ave]
unit:		
12:00:00	25.6	983.1
12:01:00	25.6	983.1
12:02:00	25.6	983.2
12:03:00	25.6	983.2